

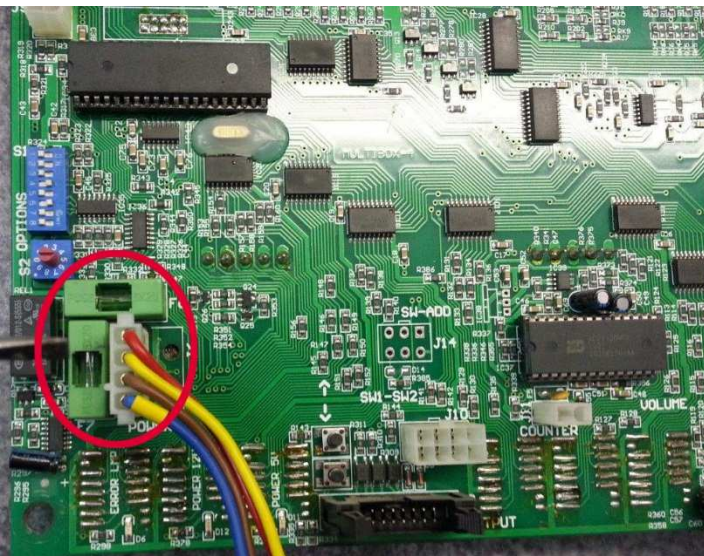
DISPLAY SHOWS 4.60 AND MACHINE RESETS

When the display shows 4.60 please do the following steps.

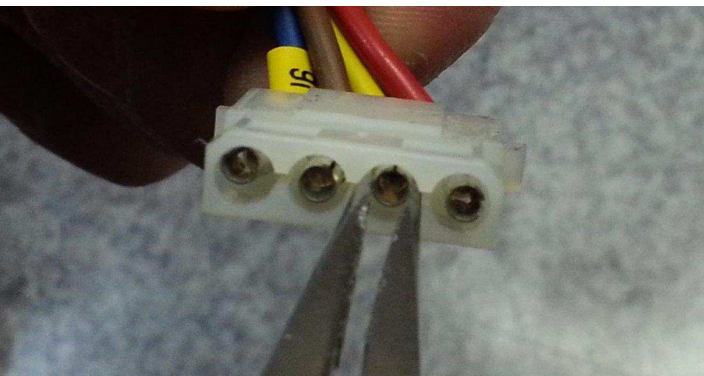
1. Turn off the machine (0).



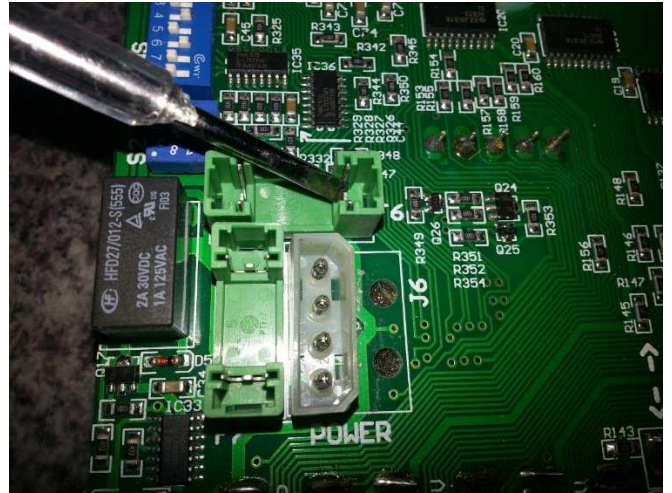
2. Open the upper back door of the machine and locate the main board.
3. On the main board locate two green plastic fuse holders and power socket. Take out the power ribbon cable.



4. Using needle-nose pliers gently squeeze all the 4 pins inside the ribbon cable as shown below.



5. When done, take out the green covers of the fuse holders, take out the fuses and clean the sockets.



6. Locate 2 metal clips in each holder.



7. Using needle-nose pliers or some small tool press the metal clips inwards so the fuse holds tighter once back inside.
8. Once done, put the fuses back, cover with fuse holder covers, pin back power ribbon cable and turn the machine on. Now it works fine.